



OFFERS IN EXCESS OF

£1,100,000

Wingfield Street

London, SE15 4LN

GARETH
JAMES

PROPERTY SUMMARY

This charming Victorian home with three double bedrooms is situated on one of Peckham Rye's most desirable streets, just moments from Bellenden Village and Bellenden Road, known for its popular independent shops, cafés, and restaurants. The house skilfully combines period charm with modern comfort, providing a warm and inviting home in one of the area's most sought-after neighbourhoods.

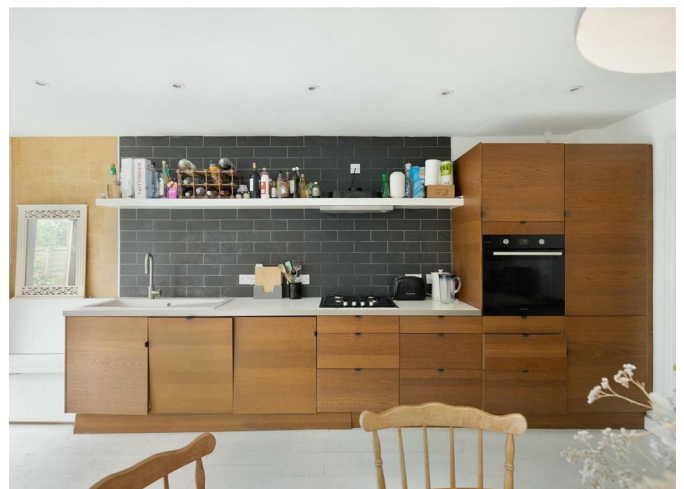
3



1



2





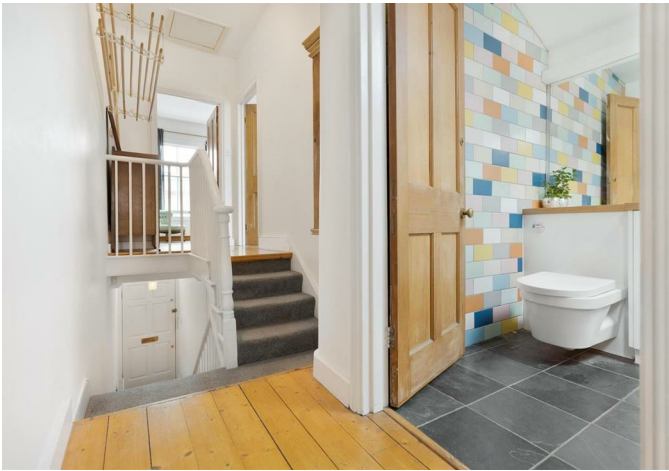
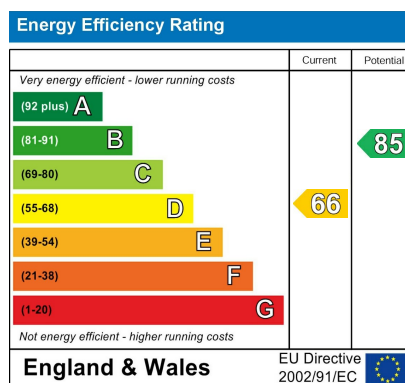




Illustration for identification purposes only. Not to scale.
Floor Plan Drawn According To RICS Guidelines.



Agents Note: Whilst every care has been taken to prepare these particulars, they are for guidance purposes only. All measurements are approximate and are for general guidance purposes only and whilst every care has been taken to ensure their accuracy, they should not be relied upon and potential buyers/tenants are advised to recheck the measurements

GARETH JAMES

OFFICE ADDRESS
129 Bellenden Road
London
SE15 4QY

OFFICE DETAILS
02077324330
sales@garethjames.com
<https://www.garethjames.com/>